



# Water Equipment Technologies

EXTENSIVE PRODUCT LINE AND EXPERT SOLUTIONS  
FOR WATER TREATMENT, ON JUST ABOUT ANY SCALE.

WET-00-01.2



**Water  
Equipment  
Technologies**

a **xylem** brand

# The right solution no matter where you need it.

## Superior cartridge filtration products



Xylem WET pleated-membrane filtration products provide the highest level of performance compared to other types of cartridge filters. High sediment loading capacity and cleanability provide for the lowest cost per gallon of treated water. Our filter cartridges offer better performance due to larger surface area and unique fluted flow channels that resist compaction and flow loss under heavy loading. They are superior in particle removal capability and have 300% more loading capacity than depth type cartridges.

## CAK/NAK Series (up to 120 GPD)



High capacity 139BP models ideal for turning brackish water into great tasting pure water.

**Applications:** Residential or low-volume commercial applications

## ES and GRO-Series (150 to 9600 GPD)



Light-duty RO for applications requiring dependable, high-purity water purification.

**Applications:** Florist, car wash, laboratory, metal finishing, parts rinsing, chemical blending, residential RO, bars/restaurants, nurseries/greenhouses and small bottled water plants.

## MS-Series RO Systems (4K to 216K GPD)



Medium-size commercial and industrial systems; designed to provide high-purity water under the rigorous demands of continuous operation and harsh environments.

**Applications:** Drinking water, beverage/bottled water, food processing, pharmaceutical, electronics production, automotive, boilers, cooling towers, chemical manufacturing, metal finishing, mine water treatment, large-scale irrigation (golf course) and many other commercial and industrial applications.

## BW-Series (up to 8 MGD)



Designed for brackish water RO in the most demanding applications.

**Applications:** Drinking water for municipalities, resort irrigation, and traditional and SBR wastewater processing.

Systems are engineered to order. If you do not see a system that fits your requirements, contact a sales representative at [www.wetpurewater.com](http://www.wetpurewater.com).

### SW-Series (5K GPD to 8 MGD)

Seawater desalination RO systems for demanding applications where desalination is the only option. Our systems are designed to perform in harsh and corrosive environments without fail.

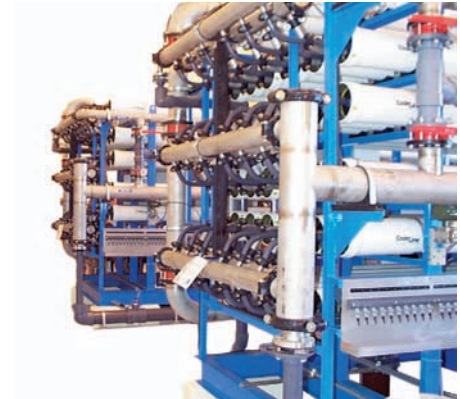
**Applications:** Hotel/resort, municipal, industrial, offshore platforms, military facilities, remote islands, irrigation and residential seawater communities.



### NanoFiltration Membranes (up to 8 MGD)

Operates at low pressure and produces high quality drinking water.

**Applications:** Water softening, food and pharmaceutical applications, and water filtration for wineries and dairy operations.



### UF Ultrafiltration

Uses membranes with pore sizes in the range of 0.1 to 0.01 micron. UF will remove high molecular-weight substances, colloidal materials and organic and inorganic polymeric molecules.

**Applications:** Water filtration and pre-treatment

Consult a sales rep for ranges.



### Containerized Systems

WET Reverse Osmosis Systems are available in climate controlled container systems for ease of installation and use. Each containerized system is available with:

- 20' to 40' high cube steel containers
- Internal lighting
- R-13 insulation
- Receptacle
- 5/8" marine grade plywood side walls,
- Steel side door with auto closer and crash bar ceiling & nose w/ FRP .85 mil PVC flooring



# We've been delivering the industry's broadest line of RO systems for more than 30 years.



When you need high purity, dependable water purification, Xylem's Water Equipment Technologies Products and Systems Group delivers. We've been supplying the industry's broadest range of commercial and industrial reverse osmosis systems for virtually every water treatment application for more than 30 years. Standard systems include many options to meet a broad range of application-specific requirements. And all systems are backed by more than two decades of RO design experience. From cartridge filtration to reverse osmosis, Xylem is your most versatile solution for advanced pure water systems.

- One of the broadest product offerings in the industry, from large seawater RO systems to small filter cartridges and housings.
- Product installations throughout the US, as well as the Middle East, Caribbean, Asia, Australia and Latin America.
- Backed by the strength and stability of Xylem with easy access to the full breadth of Xylem's water management products and services.
- State-of-the-art manufacturing centrally located to ship our products across the country and around the world.
- All systems are factory tested.
- **Dedicated service that's second to none. Our technical knowledge, application skill, global experience is emphasized and fully supported by our in-house field service team. We conduct in-depth reviews of your operating data, and provide consultation and field training to your staff. Continuous phone support ensures that your system continues to operate at optimum performance.**



Xylem Inc.  
Water Equipment Technologies  
10661 Newkirk Street  
Dallas TX 75220  
Phone: 800-786-7480  
[www.wetpurewater.com](http://www.wetpurewater.com)

Water Equipment Technologies is a trademark of Xylem Inc. or one of its subsidiaries.  
© 2011 Xylem Inc. WET-00-01.2 December 2011

## Treatment solutions.

- Seawater Reverse Osmosis
- Brackish Water Reverse Osmosis
- Nano-filtration
- Ultra-filtration
- Micro-filtration
- De-ionization
- Pre-treatment & Post-treatment
- EDI

## And more versatility for more uses.

- Drinking Water
- Boiler Feed
- Chemical Blending
- Component Rinse Water
- Wastewater Reuse
- Municipal Water Systems
- Beverage / Bottled Water Plants
- Commercial, Institutional and Residential Buildings
- Food & Dairy Processing
- Greenhouses & Nurseries
- Irrigation
- Consumer Products
- Pharmaceuticals
- Industrial Water Treatment
- Cosmetics Manufacturing
- Electronics Manufacturing
- Laboratory Water
- Disaster Relief / Emergency Water Systems
- Mining